

A.V.V.M SRI PUSHPAM COLLEGE (AUTONOMOUS) POONDI – 613 503,

THANJAVUR (DT) TAMIL NADU, INDIA

DEPARTMENT OF BOTANY

HERBAL GARDEN

Funded by

NATIONAL MEDICINAL PLANTS BOARD – (NMPB)

Government of India, New Delhi



HERBAL GARDEN



1. *Acacia nilotica* (L.) Willd

Systematic position

Class : Dicotyledones

Order : Rosales

Family : Leguminosae

Genus : *Acacia*

Uses : Urino- genital diseases.

2. *Acalypha wilkesiana* Hort.

Systematic position

Class : Dicotyledones

Order : Malpighiales

Family : Euphorbiaceae

Genus : *Acalypha*

Uses : Fungal skin diseases.

கருவேல மரம்



குப்பை மேனி வகை



3. *Achyranthes aspera* L.

Systematic position

Class : Dicotyledones

Order : Caryophyllales

Family : Amaranthaceae

Genus : *Achyranthes*

Uses : Diuretic, leucorrhoea, anaemia, jaundice, poisoning & renal dropsies.

நாயுருவி



ஆடாதொடா

4. *Adhatoda vasica* Nees.

Systematic position

Class : Dicotyledones

Order : Caryophyllales

Family : Amaranthaceae

Genus : *Adhatoda*

Uses : Skin affections, bronchial troubles, diarrhoea, dysentery & glandular tumours.



5. *Aloe vera* (L.) Burm.f.

Systematic position

Class : Monocotyledons

Order : Asparagales

Family : Xantorrhoeaceae

Genus : *Aloe*

Uses : Leprosy, piles, mental disorders, stomach disorders, eye disorders & worm infections.

6. *Alpinia galanga* L. (Willd).

Systematic position

Class : Monocotyledons

Order : Zingiberales

Family : Zingiberaceae

Genus : *Alpinia*

Uses : Fever, ulcers, poisoning & pain.

சோற்றுக் கற்றாழை



சித்தரத்தை



7. *Alternanthera sessilis* (L.) R. Br.

Systematic position

Class : Dicotyledons
Order : Caryophyllales
Family : Amaranthaceae
Genus : *Alternanthera*

Uses : Whole plant used in night blindness.

8. *Anisomeles malabarica* (L.) R. Br.

Systematic position

Class : Dicotyledons
Order : Lamiales
Family : Lamiaceae
Genus : *Anisomeles*

Uses : Its essential oil is used in rheumatism.

பொன்னாங்கன்னி



பேய்மிரட்டி



9. *Artabotrys odoratissimus* (Lam.) Merr.

Systematic position

Class : Dicotyledons

Order : Magnoliales

Family : Annonaceae

Genus : *Artabotrys*

Uses : Leaves contain an antifertility principle.

10. *Baliospermum montanum* (Willd.)

Systematic position

Class : Dicotyledons

Order : Malpighiales

Family : Euphorbiaceae

Genus : *Baliospermum*

Uses : Snake-bite poisoning, blood disorders, skin diseases, liver disorders & piles.

மனோரஞ்சிதம்



பேயாமணக்கு



11 . *Basella rubra* L.

Systematic position

Class : Dicotyledons

Order : Caryophyllales

Family : Basellaceae

Genus : *Basella*

Uses : Constipation, drug addiction, abscess & retention of urine



கொடி பசளி

காஞ்சினி

12. *Bauhinia tomentosa* L.

Systematic position

Class : Dicotyledons

Order : Fabales

Family : Fabaceae

Genus : *Bauhinia*

Uses : Digestive disorders, cough, leucorrhoea & diarrhoea.



13. *Bauhinia variegata* L.

Systematic position

Class : Dicotyledons

Order : Fabales

Family : Fabaceae

Genus : *Bauhinia*

Uses : Ulcers, obesity, constipation & haemorrhage.

மந்தாரை



14. *Bougainvillea spectabilis* Willd.

Systematic position

Class : Dicotyledons

Order : Caryophyllales

Family : Nyctaginaceae

Genus : *Bougainvillea*

Uses : Ulcers, diabetic, skin diseases & human sterility.

காகித பூ



15. *Caesalpinia sappan L.*

Systematic position

Class : Dicotyledons

Order : Fabales

Family : Fabaceae

Genus : *Caesalpinia*

Uses : Bronchitis, wounds, erysipelas & goiter.

16. *Calophyllum inophyllum L.*

Systematic position

Class : Dicotyledons

Order : Malpighiales

Family : Calophyllaceae

Genus : *Calophyllum*

Uses : Astringent, internal haemorrhage, rheumatism & skin diseases.

பதிமுகம்



புன்னை



17. *Calotropis procera* (Aiton) W.T. Aiton

Systematic position

Class : Dicotyledons

Order : Gentianales

Family : Asclepiadaceae

Genus : *Calotropis*

Uses : Root bark used in leprosy.

18. *Canna indica* L.

Systematic position

Class : Monocotyledons

Order : Zingiberales

Family : Cannaceae

Genus : *Canna*

Uses : Fever, anaemia, ulcers & earache.

எருக்கு



கல்வாழை



19. *Capsicum frutescens* L.

Systematic position

Class : Dicotyledons

Order : Solanales

Family : Solanaceae

Genus : *Capsicum*

Uses : Carminative and rubefacient.

20. *Cardiospermum halicacabum* L.

Systematic position

Class : Dicotyledons

Order : Sapindales

Family : Sapindaceae

Genus : *Cardiospermum*

Uses : Diuretic, diaphoretic, emetic, emmenagogue, laxative & nervous diseases.

மிளகாய்



முடக்கத்தான்



21. *Cassia alata* L.

Systematic position

Class : Dicotyledons

Order : Fabales

Family : Fabaceae

Genus : *Cassia*

Uses : Skin troubles, purgative.

22. *Catharanthus roseus* (L.) G. Don.

Systematic position

Class : Dicotyledons

Order : Gentianales

Family : Apocynaceae

Genus : *Catharanthus*

Uses : Diabetes, relief in pain of wasp stings.

வண்டுகொல்லி



நித்தியக்கல்யாணி



23. *Centella asiatica* (L.) Urban

Systematic position

Class : Dicotyledons

Order : Apiales

Family : Apiaceae

Genus : *Centella*

Uses : Digestive disorder, urinary diseases, mental retardation, fainting, fever & vomiting.

24. *Citrus medica* L.

Systematic position

Class : Dicotyledons

Order : Sapindales

Family : Rutaceae

Genus : *Citrus*

Uses : Preserved rind used in dysentery & piles.

வல்லாரை



நார்த்தாம் பழம்



25. *Cleome viscosa* L

Systematic position

Class : Dicotyledons

Order : Brassicales

Family : Cleomaceae

Genus : *Cleome*

Uses : Fever, diseases of kapha & poisoning.



நாய் கடுகு

26. *Clerodendron inerme* L

Systematic position

Class : Dicotyledons

Order : Lamiales

Family : Lamiaceae

Genus : *Clerodendron*

Uses : Glandular swellings, eczema, leucorrhoea, scabies, pain & snake-bite poisoning.



பீக்கலாத்தி

27. *Clerodendron phlomidis* L

Systematic position

Class : Dicotyledons

Order : Lamiales

Family : Lamiaceae

Genus : *Clerodendron*

Uses : Measles, syphilis & bitter tonic.

28. *Clitoria ternatea* L

Systematic position

Class : Dicotyledons

Order : Fabales

Family : Fabaceae

Genus : *Clitoria*

Uses : Roots cathartic and diuretic.

தழுதாழை



சங்கு பூ



29. *Codiaeum variegatum* (L.) A. Juss

Systematic position

Class : Dicotyledons

Order : Malpighiales

Family : Euphorbiaceae

Genus : *Codiaeum*

Uses : Pounded leaves applied to the abdomen of children suffering from urinary trouble.

30. *Coleus blumei* Benth

Systematic position

Class : Dicotyledons

Order : Lamiales

Family : Lamiaceae

Genus : *Coleus*

Uses : Inflammation & anti- microbial agent.

குரோட்டன் வகை



குரோட்டன் வகை



31. *Colocasia sp.*

Systematic position

Class : Monocotyledons

Order : Alismatales

Family : Araceae

Genus : *Colocasia*

Uses : Astringent and styptic.

சேம்பஇலை



32. *Costus igneus* N.E.Br

Systematic position

Class : Dicotyledons

Order : Zingiberales

Family : Zingiberaceae

Genus : *Costus*

Uses : Diabetic, leprosy, cough, polyuria, haemorrhage & fever.

இன்சலின்



33. *Crescentia cujete* L

Systematic position

Class : Dicotyledons

Order : Lamiales

Family : Lamiaceae

Genus : *Crescentia*

Uses : Bark decoction used as a vulnerary.

34. *Datura discolor* Bernh

Systematic position

Class : Dicotyledons

Order : Solanales

Family : Solanaceae

Genus : *Datura*

Uses : Leaves smoked as cigarettes.

திருஓடு மரம்



கருஊமத்தை



35. *Datura metal* L.

Systematic position

Class : Dicotyledons

Order : Solanales

Family : Solanaceae

Genus : *Datura*

Uses : Leaves narcotic and antispasmodic.

ஊமத்தை



திருக்கள்ளி

36. *Euphorbia tirucalli* L.

Systematic position

Class : Dicotyledons

Order : Malpighiales

Family : Euphorbiaceae

Genus : *Euphorbia*

Uses : Latex- skin diseases, diseases of vatam and kapham, leprosy, glandular swellings & intestinal worms.



37. *Eranthemum trinervia*

Systematic position

Class : Dicotyledons

Order : Lamiales

Family : Acanthaceae

Genus : *Eranthemum*

Uses : Roots boiled in milk & used in leucorrhoea.



பால்பெருக்கி

38. *Euphorbia cyathophora* Murray.

Systematic position

Class : Dicotyledons

Order : Malpighiales

Family : Euphorbiaceae

Genus : *Euphorbia*

Uses : Capsule used to remove warts, scorpion sting, worm infestation & ulcers.



39. *Euphorbia milii* Des Moul

Systematic position

Class : Dicotyledons

Order : Malpighiales

Family : Euphorbiaceae

Genus : *Euphorbia*

Uses : Warts and cancer.

40. *Ficus racemosa* L.

Systematic position

Class : Dicotyledons

Order : Rosales

Family : Moraceae

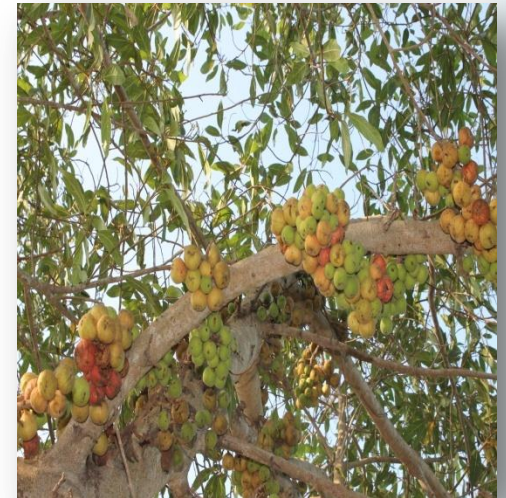
Genus : *Ficus*

Uses : Diarrhoea, diabetes, bilious affection, piles & uterine bleeding.

கள்ளி வகை



அத்தி



41. *Gossypium hirsutum* L

Systematic position

Class : Dicotyledons

Order : Malvales

Family : Malvaceae

Genus : *Gossypium*

Uses : Leucorrhoea, ulcers, swellings, fever, dysentery, piles, cut wounds, aphrodisiac.

42. *Guazuma ulmifolia* Lam

Systematic position

Class : Dicotyledons

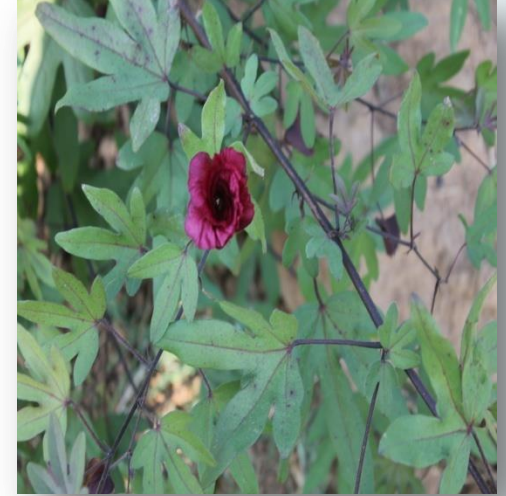
Order : Malvales

Family : Malvaceae

Genus : *Guazuma*

Uses : Fruits used as a pectoral, Leaf extract reduces corpulence.

பருத்தி



ருத்ராட்சம்



43. *Hibiscus rosa-sinensis* L

Systematic position

Class : Dicotyledons

Order : Malvales

Family : Malvaceae

Genus : *Hibiscus*

Uses : Leucorrhoea, menorrhagia, polyuria, hair falling & contraceptive.

44. *Indoneesiella echioides* (L.) Sreem.

Systematic position

Class : Dicotyledons

Order : Lamiales

Family : Acanthaceae

Genus : *Indoneesiella*

Uses : Juice used as a febrifuge.

செம்பருத்தி



கோபுரம் தாங்கி



45. *Ixora coccinea* L

Systematic position

Class : Dicotyledons

Order : Gentianales

Family : Rubiaceae

Genus : *Ixora*

Uses : Venereal diseases, fever, thirst, leucorrhoea, dysentery & ulcers.

46. *Jatropha multifida* L

Systematic position

Class : Dicotyledons

Order : Malpighiales

Family : Euphorbiaceae

Genus : *Jatropha*

Uses : Indigestion, scabies, fevers, venereal diseases & criminal poisoning.

இட்லி பூ



காட்டாமணக்கு வகை



47. *Justicia gendarussa* Burm. f

Systematic position

Class : Dicotyledons

Order : Gentianales

Family : Rubiaceae

Genus : *Justicia*

Uses : Boils, swellings & diarrhoea.

48. *Lantana camara* L

Systematic position

Class : Dicotyledons

Order : Lamiales

Family : Verbenaceae

Genus : *Lantana*

Uses : Tumours, rheumatism, malaria & heamorrhage.

வதைகுட்டி



உன்னி செடி



49. *Limonia acidissima* L

Systematic position

Class : Dicotyledons

Order : Sapindales

Family : Rutaceae

Genus : *Limonia*

Uses : Leaves aromatic, carminative, astringent & stomachic

50. *Melia azedarach* L

Systematic position

Class : Dicotyledons

Order : Sapindales

Family : Meliaceae

Genus : *Melia*

Uses : Worm infestation, amenorrhoea, sterility of female, eczema & splenomegaly.

விளா மரம்



மலை வேம்பு



51. *Millingtonia hortensis* L.f

Systematic position

Class : Dicotyledons

Order : Lamiales

Family : Lamiaceae

Genus : *Millingtonia*

Uses : Tannin from bark used as antipyretic.

52. *Mimosa pudica* L

Systematic position

Class : Dicotyledons

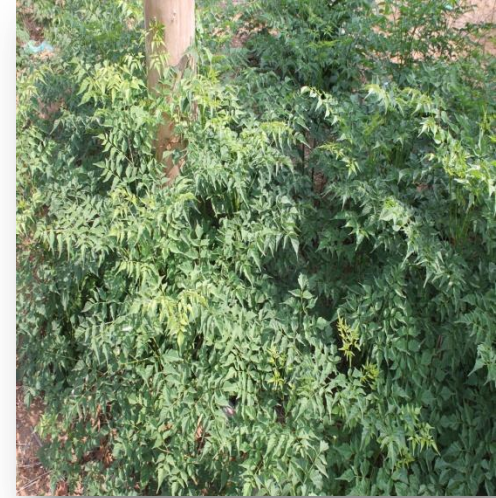
Order : Fabales

Family : Mimosaceae

Genus : *Mimosa*

Uses : Urinary complaints, sinus, sores & piles.

மரமல்லி



தொட்டால் சுருங்கி



53. *Nerium oleander* L

Systematic position

Class : Dicotyledons

Order : Gentianales

Family : Apocynaceae

Genus : *Nerium*

Uses : Leprosy, skin diseases, glandular swellings, poisoning & wounds.



செவ்வரளி

54. *Nyctanthes arbor-tristis* L

Systematic position

Class : Dicotyledons

Order : Lamiales

Family : Oleaceae

Genus : *Nyctanthes*

Uses : Fever, worm infestation, diseases of vatam & scabies.



பாரிஜாதம்

55. *Ocimum sanctum* L.

Systematic position

Class : Dicotyledons

Order : Lamiales

Family : Lamiaceae

Genus : *Ocimum*

Uses : Diuretic, carminative, gonorrhoea, dysentery, diarrhoea, earache, stomach disorder & nasal disorders.

துளசி



திருநீற்றுப்பச்சிலை

56. *Ocimum basilicum* L

Systematic position

Class : Dicotyledons

Order : Lamiales

Family : Lamiaceae

Genus : *Ocimum*

Uses : Fever, coryza, mental disorders, cough & ulcers.



57. *Pandanus tectorius* Parkinson

Systematic position

Class : Dicotyledons

Order : Pandanales

Family : Pandanaceae

Genus : *Pandanus*

Uses : Headache, anorexia, indigestion, polyuria, eye diseases & leprosy.



தாழை

அரை நெல்லி

58. *Phyllanthus acidus* L. Skeels

Systematic position

Class : Dicotyledons

Order : Malpighiales

Family : Phyllanthaceae

Genus : *Phyllanthus*

Uses : Roots and seeds cathartic, laxative, biliousness.



59. *Phyllanthus amarus* Schum & Thonn

Systematic position

Class : Dicotyledons

Order : Malpighiales

Family : Phyllanthaceae

Genus : *Phyllanthus*

Uses : Jaundice, diabetes, eye disorders, skin diseases, vomiting, diseases of head.

60. *Phyllanthus emblica* L

Systematic position

Class : Dicotyledons

Order : Malpighiales

Family : Phyllanthaceae

Genus : *Phyllanthus*

Uses : Fruit astringent, cooling, diuretic , laxative, a rich source of vitamin C.

கீழா நெல்லி



நெல்லிக்காய்



61. *Piper nigrum* L

Systematic position

Class : Dicotyledons

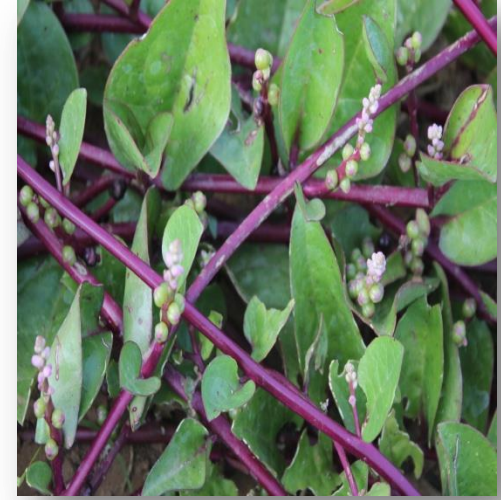
Order : Piperales

Family : Piperaceae

Genus : *Piper*

Uses : Stimulant, fever, stomachic, piles & cutaneous troubles.

மிளகு



உதிர வேங்கை

62. *Pterocarpus santalinus* L. f

Systematic position

Class : Dicotyledons

Order : Fabales

Family : Fabaceae

Genus : *Pterocarpus*

Uses : Oedema, headache, skin diseases, vomiting, diarrhoea, eye diseases, thirst & leprosy.



63. *Pisonia grandis* R.Br

Systematic position

Class : Dicotyledons

Order : Caryophyllales

Family : Nyctaginaceae

Genus : *Pisonia*

Uses : Fresh leaves used as an anti- inflammatory and as a diuretic.

லட்சகட்டுக் கீரை



ரோஜா

64. *Rosa damascena* Mill

Systematic position

Class : Dicotyledons

Order : Rosales

Family : Rosaceae

Genus : *Rosa*

Uses : Pyrexia, thirst, leucorrhoea, carminative, laxative & stomach ache.



65. *Sauropus androgynus* (L.) Merr

Systematic position

Class : Dicotyledons

Order : Malpighiales

Family : Phyllanthaceae

Genus : *Sauropus*

Uses : Decoction of the roots given in stricture of the bladder and in fevers.

66. *Solanum nigrum* L

Systematic position

Class : Dicotyledons

Order : Solanales

Family : Solanaceae

Genus : *Solanum*

Uses : Leprosy, piles, fever, oedema, polyuria, hiccup, cardiac diseases, vomiting & rejuvenator.

தவசி கீரை



மணத்தக்காளி



67. *Solanum trilobatum* L

Systematic position

Class : Dicotyledons

Order : Solanales

Family : Solanaceae

Genus : *Solanum*

Uses : Berries and flowers used to relieve cough.

தூதுவளை



சுண்டைக்காய்

68. *Solanum torvum* Sw

Systematic position

Class : Dicotyledons

Order : Solanales

Family : Solanaceae

Genus : *Solanum*

Uses : Cough, cracks in the feet, diuretic & digestive.



69. *Tecoma stans* (L.) Juss ex. kunth

Systematic position

Class : Dicotyledons

Order : Lamiales

Family : Lamiaceae

Genus : *Tecoma*

Uses : Roots diuretic, vermifuge and tonic.



சொர்ண பட்டி

70. *Terminalia bellerica* (Gaertn.) Roxb

Systematic position

Class : Dicotyledons

Order : Myrtales

Family : Combretaceae

Genus : *Terminalia*

Uses : Guinea worm diseases, leucorrhoea, venereal diseases, hypertension & pox.



தானி மரம்

71. *Thuja orientalis* L

Systematic position

Class : Pinopsida

Order : Pinales

Family : Cupressaceae

Genus : *Thuja*

Uses : Leaves used as a tonic, diuretic and antipyretic.



72. *Verbesina encelioides* (Cav.) Benth. & Hook. F.ex A. Gray.

Systematic position

Class : Dicotyledons

Order : Asterales

Family : Asteraceae

Genus : *Verbesina*

Uses : Inflammatory action & spider bite.



73. *Vetiveria zizanioides* (L.) Nash.

Systematic position

Class : Monocots

Order : Poales

Family : Poaceae

Genus : *Vetiveria*

Uses : Diseases of pittam, thirst, jaundice, fever, headache & burns.



வெட்டி வேர்

தண்ணீர்விட்டான் கிழங்கு

74. *Asparagus aethiopicus* L

Systematic position

Class : Monocots

Order : Asparagales

Family : Asparagaceae

Genus : *Asparagus*

Uses : Urinary diseases, gastritis, eye diseases, tonic & diseases of nervous disorders.



75. *Wedelia chinensis* (Osbeck.) Merr.

Systematic position

Class : Dicotyledons

Order : Asterales

Family : Asteraceae

Genus : *Wedelia*

Uses : Cough, skin diseases, menorrhagia & jaundice.

76. *Coreopsis gladiata* Walter

Systematic position

Class : Dicotyledons

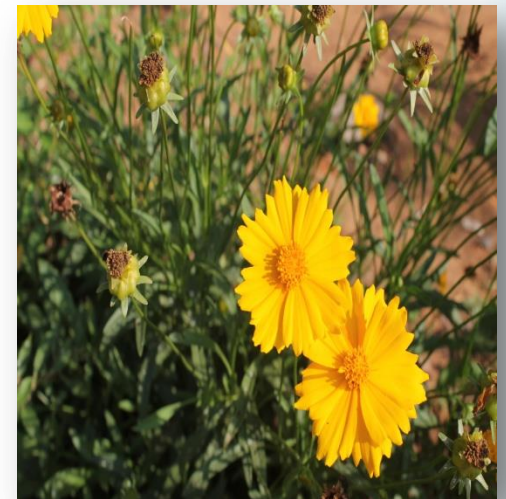
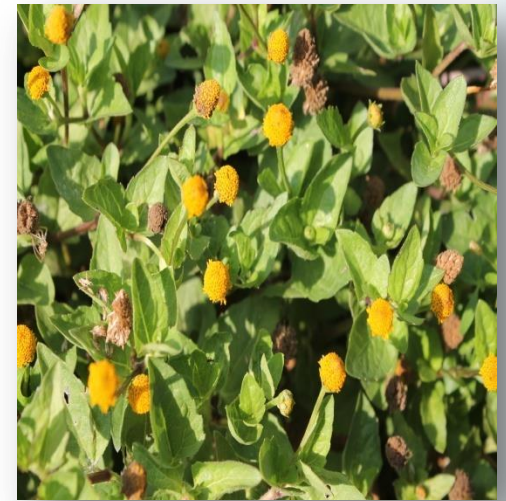
Order : Asterales

Family : Asteraceae

Genus : *Coreopsis*

Uses : Ornamental.

கொடி கரிசாலை



77. *Abutilon indicum* (Link) Sweet

Systematic position

Class : Dicotyledons

Order : Malvales

Family : Malvaceae

Genus : *Abutilon*

Uses : Piles, ulcers, haematemesis, cough, leprosy, jaundice & disorders of nervous.

78. *Commelina benghalensis* L

Systematic position

Class : Monocotyledon

Order : Commelinales

Family : Commelinaceae

Genus : *Commelina*

Uses : Leprosy, haemorrhage, fever & laxative.

துத்தி



கானா வாழை



79. *Commelina diffusa* Burm. f

Systematic position

Class : Monocotyledon

Order : Commelinales

Family : Commelinaceae

Genus : *Commelina*

Uses : A dye is also obtained from the juice of the petals for use in painting; febrifugal and diuretic effects.

80. *Eclipta prostrata* (L.) L

Systematic position

Class : Dicotyledons

Order : Asterales

Family : Asteraceae

Genus : *Eclipta*

Uses : Jaundice, skin diseases, inflammation, anaemia, dental diseases, cough, ear & eye diseases.

கானா வாழை



கரிசலாங்கண்ணி



81. *Evolvulus alsinoides* (L.) L

Systematic position

Class : Dicotyledons

Order : Solanales

Family : Convolvulaceae

Genus : *Evolvulus*

Uses : Fever, cough, diseases of vatam, amenorrhoea, diarrhoea.

விஷ்ணுகரந்தை



82. *Malva neglecta* Wallr.

Systematic position

Class : Dicotyledons

Order : Malvales

Family : Malvaceae

Genus : *Malva*

Uses : Skin diseases, respiratory disorders & gastrointestinal tract.



83. *Oxalis stricta* L

Systematic position

Class : Dicotyledons

Order : Oxalidales

Family : Oxalidaceae

Genus : *Oxalis*

Uses : Fever, headache, abdominal disorders, venereal diseases & digestive disorders.

விராலிக்கை



ஆமணக்கு

84. *Ricinus communis* L

Systematic position

Class : Dicotyledons

Order : Malpighiales

Family : Euphorbiaceae

Genus : *Ricinus*

Uses : Vatam, constipation, piles, chest pain, cough, leprosy, fever & abdominal disorders.



85. *Ruellia tuberosa* L

Systematic position

Class : Dicotyledons

Order : Lamiales

Family : Acanthaceae

Genus : *Ruellia*

Uses : Anti- diabetic, antipyretic, analgesic, antihypertensive, gastro protective & gonorrhoea.

காயபச்சிலை



கிரந்திநாயகம்

86. *Ruellia prostrata* Poir.

Systematic position

Class : Dicotyledons

Order : Lamiales

Family : Acanthaceae

Genus : *Ruellia*

Uses : Natural dye for textiles.



87. *Sida cordata* (Burm.f.) Borss.

Systematic position

Class : Dicotyledons

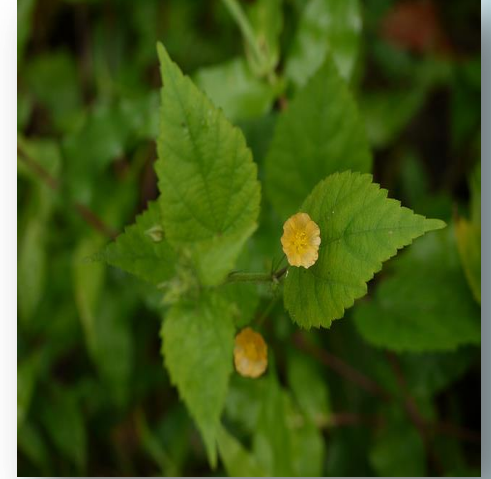
Order : Malvales

Family : Malvaceae

Genus : *Sida*

Uses : Fevers, urinary complaints, leucorrhoea, cut & bruises.

சீதாமூட்டி



88. *Sida acuta* Burm.f.

Systematic position

Class : Dicotyledons

Order : Malvales

Family : Malvaceae

Genus : *Sida*

Uses : Diseases of vatam, fever, ear diseases, skin eruptions & worm infestation.

பழம்பாசி



89. *Sida cordifolia* L

Systematic position

Class : Dicotyledons

Order : Malvales

Family : Malvaceae

Genus : *Sida*

Uses : Piles, abscess, pain, nervous disorders, coryza & cardiac diseases.

90. *Solanum nigrum* L

Systematic position

Class : Dicotyledons

Order : Solanales

Family : Solanaceae

Genus : *Solanum*

Uses : Leprosy, piles, fever, oedema, polyuria, cardiac diseases, vomiting, rejuvenator & cough.

குருந்தொட்டி வேர்



மனத்தக்காளி



91. *Solanum xanthocarpum* Schrad & Wendl.

Systematic position

Class : Dicotyledons

Order : Solanales

Family : Solanaceae

Genus : *Solanum*

Uses : Diuretic, carminative, cough, tuberculosis, fever & indigestion.

92. *Vernonia cinerea* (L.) Less.

Systematic position

Class : Dicotyledons

Order : Asterales

Family : Asteraceae

Genus : *Vernonia*

Uses : Leucorrhoea, skin diseases, stomatitis, thirst.

கண்டங்கத்திரி



பூவங்குருந்தல்



93. *Indigofera aspalathoides* Vahl

Systematic position

Class : Dicotyledons

Order : Fabales

Family : Fabaceae

Genus : *Indigofera*

Uses : Leprosy, cancer, skin diseases.

94. *Phyla nodiflora* (L.) Greene

Systematic position

Class : Dicotyledons

Order : Lamiales

Family : Verbinaceae

Genus : *Phyla*

Uses : Dysentery, dandruff, ulcer, piles.

சிவனார்வேம்பு



பொடுதலை



95. *Mollugo pentaphylla* L

Systematic position

Class : Dicotyledons

Order : Caryophyllales

Family : Molluginaceae

Genus : *Mollugo*

Uses : Stomachic, aperients, skin diseases, earache.



குத்துத்திராய்

96. *Mollugo nudicaulis* Lam

Systematic position

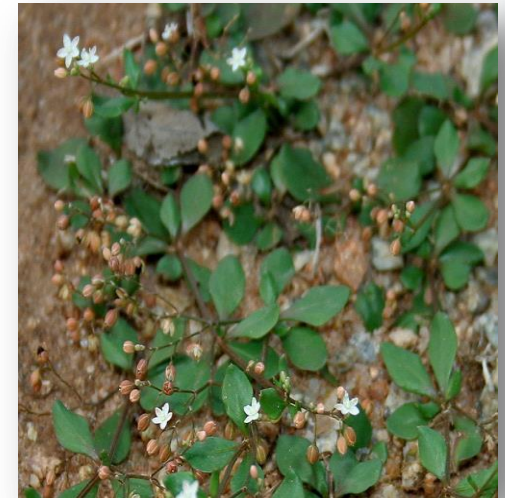
Class : Dicotyledons

Order : Caryophyllales

Family : Molluginaceae

Genus : *Mollugo*

Uses : Pectoral, whooping cough, biles.



பர்பாடகம்

97. *Mollugo oppositifolia* L

Systematic position

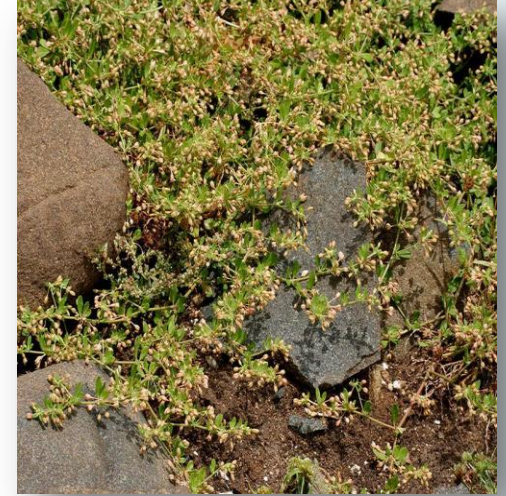
Class : Dicotyledons

Order : Caryophyllales

Family : Molluginaceae

Genus : *Mollugo*

Uses : Skin diseases, cough, fever.



தூரா பூண்டு

98. *Thephrosia purpurea* (L) Pers

Systematic position

Class : Dicotyledons

Order : Fabales

Family : Fabaceae

Genus : *Thephrosia*

Uses : Ulcers, leprosy, asthma, boils and pimples.



கொழுஞ்சி

99. *Heliotropium indicum* L

Systematic position

Class : Dicotyledons

Order : Polemoniales

Family : Boraginaceae

Genus : *Heliotropium*

Uses : Ulcer, eczema, digestive disorders.

100. *Boerhavia diffusa* L. nom. Cons.

Systematic position

Class : Dicotyledons

Order : Caryophyllales

Family : Nyctaginaceae

Genus : *Boerhavia*

Uses : Arthritis, jaundice, cardiac diseases.

தேள்கொடுக்கு



மூக்கிரட்டை



Thank You!

